



# Chronic Myeloid Leukemia

Brian Druker, MD

Prince Mahidol Award Conference

February 1, 2019



KNIGHT  
CANCER  
*Institute*

# **Chronic Myeloid Leukemia (CML)**

- **15 - 20 % of all leukemias**
- **1 - 2 cases per 100,000 per year**

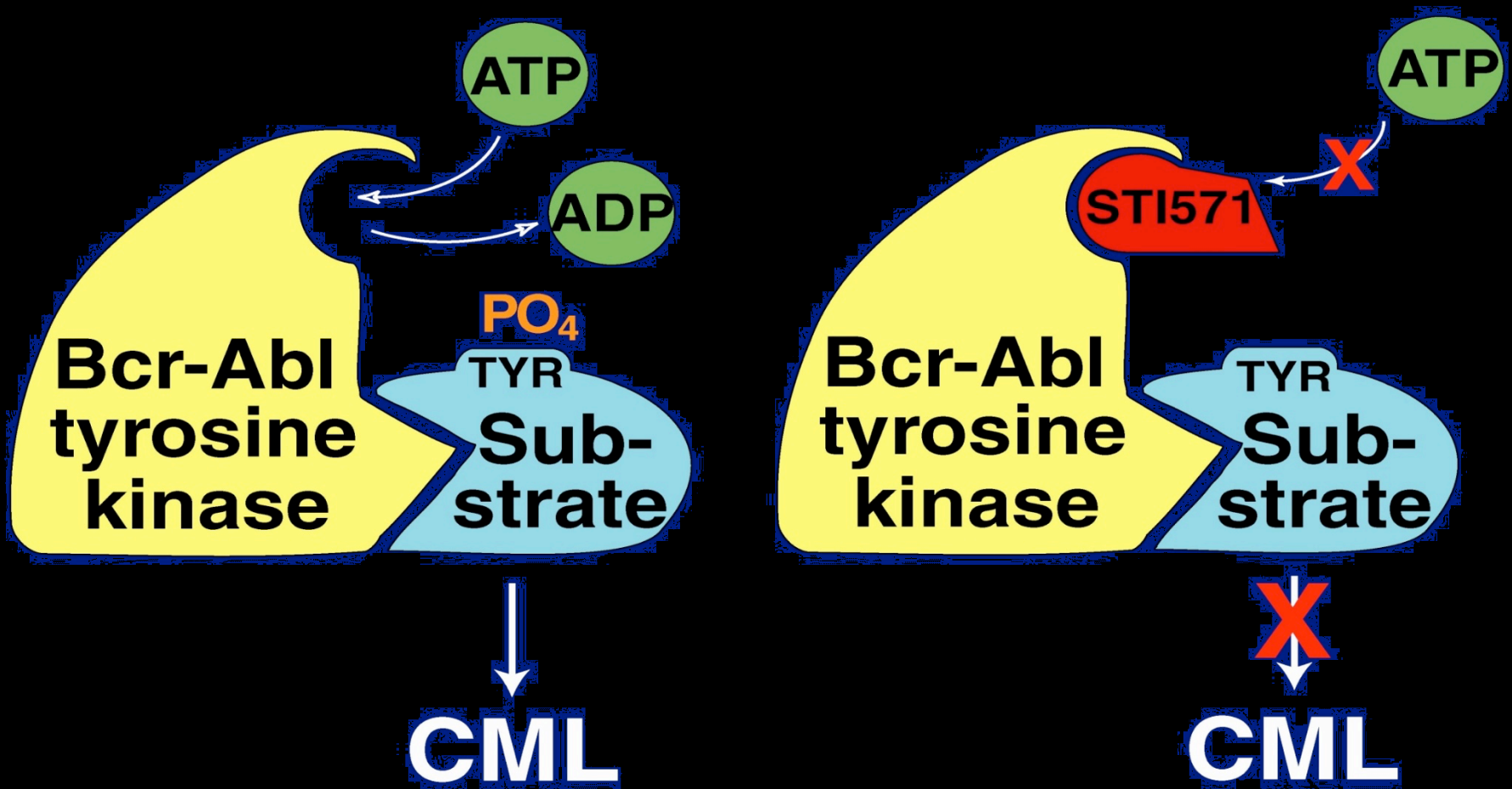
**Average age of onset - 50 to 60 yrs of age**

**Median survival – 3 to 5 years**

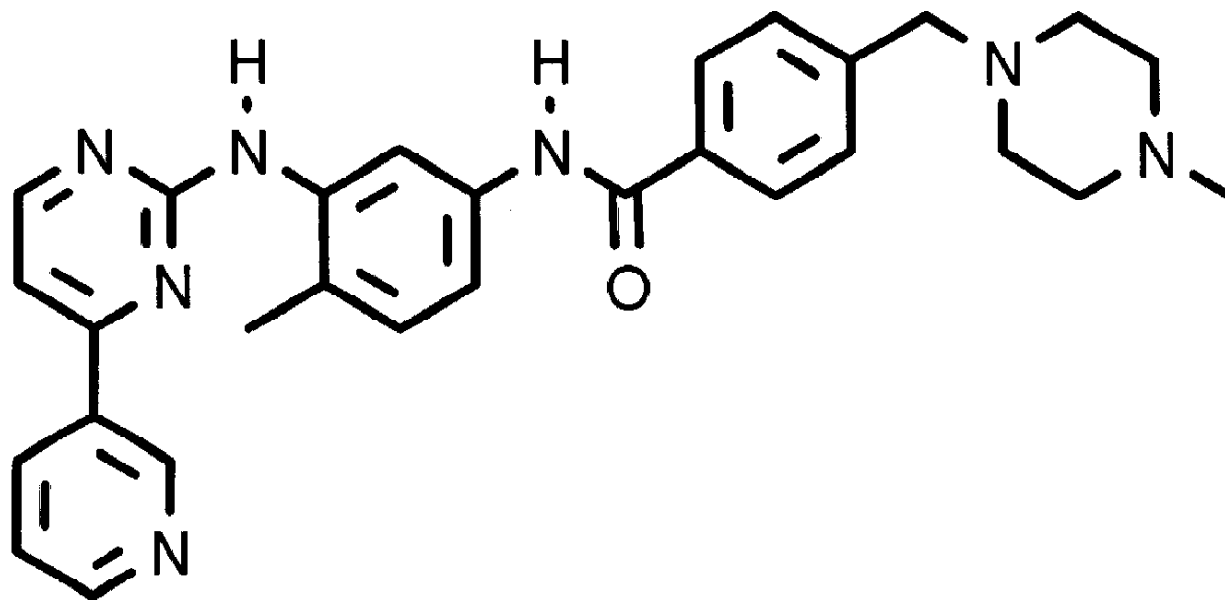




# BCR-ABL As a Therapeutic Target for CML



STI571 (CGP 57148B)  
Imatinib mesylate  
Gleevec™, Glivec®



# CML Summary

# CML Summary

- There are currently 5 drugs on the market that target BCR-ABL

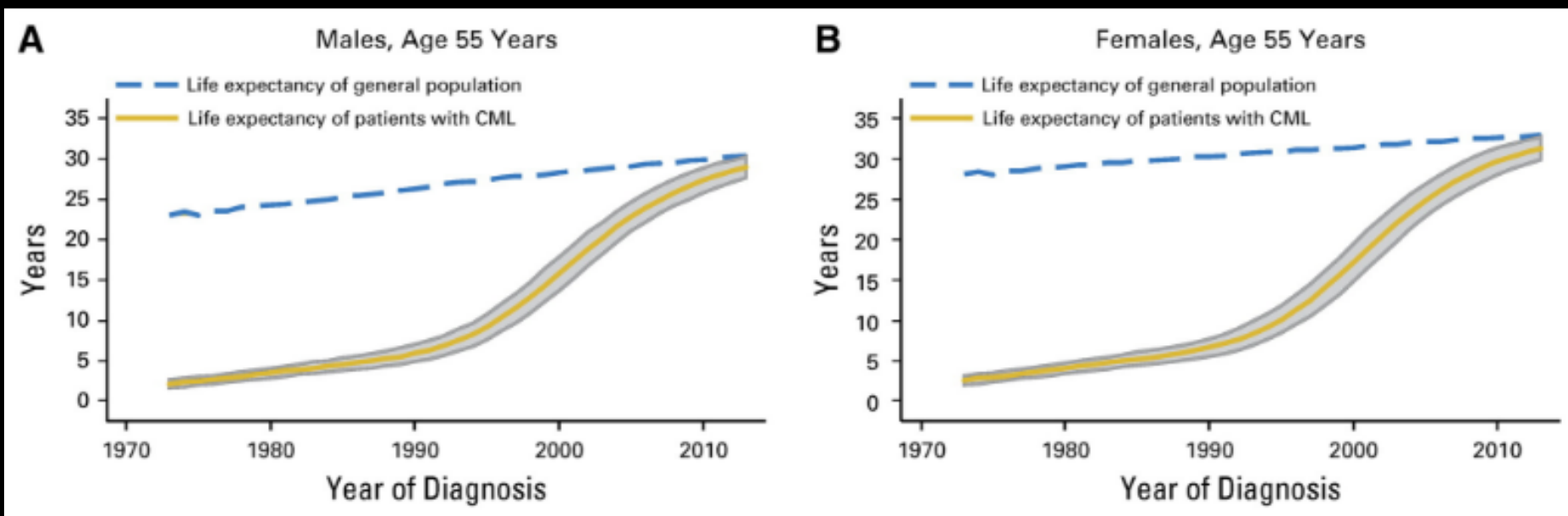
# CML Summary

- There are currently 5 drugs on the market that target BCR-ABL

# CML Summary

- There are currently 5 drugs on the market that target BCR-ABL
- Survival has been significantly prolonged

# CML Life Expectancy



Bower et al, J Clin Onc 34:2851-7, 2016



**iCMLf**

International  
Chronic Myeloid Leukemia  
Foundation

Since 2009 we have been  
working with the premise

*“The improved survival in CML...  
is so dramatic that these new  
agents must be made available...  
As rapidly as possible  
throughout the whole world.”*





**iCMLf**

International  
Chronic Myeloid Leukemia  
Foundation

## As we look to the future

*CML is predicted to become the most prevalent leukaemia by 2040 when there are projected to be over 3 million patients worldwide.*



A world map with green and red dots indicating the number of countries where the number of participants increased by more than 1 grade in that country (green dots) and the number of countries where the number of participants increased by more than 1 grade from that country (red dots). The dots are numbered to show the count for each country.

Region	Country	Green Dot (Increase in that country)	Red Dot (Increase from that country)
North America	USA	1	1
South America	Brazil	1	1
South America	Argentina	1	1
South America	Chile	1	1
South America	Peru	1	1
South America	Venezuela	1	1
South America	Colombia	1	1
South America	Ecuador	1	1
South America	Guatemala	1	1
South America	El Salvador	1	1
South America	Honduras	1	1
South America	Nicaragua	1	1
South America	Panama	1	1
South America	Cuba	1	1
South America	Dominican Republic	1	1
South America	Jamaica	1	1
South America	Trinidad and Tobago	1	1
South America	Guyana	1	1
South America	Suriname	1	1
South America	French Guiana	1	1
South America	Guadeloupe	1	1
South America	Martinique	1	1
South America	Reunion	1	1
South America	Mayotte	1	1
South America	French Polynesia	1	1
South America	New Caledonia	1	1
South America	Wallis and Futuna	1	1
South America	Polynesia	1	1
South America	Samoa	1	1
South America	Tonga	1	1
South America	Fiji	1	1
South America	Vanuatu	1	1
South America	Palau	1	1
South America	Marshall Islands	1	1
South America	Micronesia	1	1
South America	Northern Mariana Islands	1	1
South America	Guam	1	1
South America	U.S. Virgin Islands	1	1
South America	Puerto Rico	1	1
South America	Aruba	1	1
South America	Curaçao	1	1
South America	Trinidad and Tobago	1	1
South America	Guyana	1	1
South America	Suriname	1	1
South America	French Guiana	1	1
South America	Guadeloupe	1	1
South America	Martinique	1	1
South America	Reunion	1	1
South America	Mayotte	1	1
South America	French Polynesia	1	1
South America	New Caledonia	1	1
South America	Wallis and Futuna	1	1
South America	Polynesia	1	1
South America	Samoa	1	1
South America	Tonga	1	1
South America	Fiji	1	1
South America	Vanuatu	1	1
South America	Palau	1	1
South America	Marshall Islands	1	1
South America	Micronesia	1	1
South America	Northern Mariana Islands	1	1
South America	Guam	1	1
South America	U.S. Virgin Islands	1	1
South America	Puerto Rico	1	1
South America	Aruba	1	1
South America	Curaçao	1	1
South America	Trinidad and Tobago	1	1
South America	Guyana	1	1
South America	Suriname	1	1
South America	French Guiana	1	1
South America	Guadeloupe	1	1
South America	Martinique	1	1
South America	Reunion	1	1
South America	Mayotte	1	1
South America	French Polynesia	1	1
South America	New Caledonia	1	1
South America	Wallis and Futuna	1	1
South America	Polynesia	1	1
South America	Samoa	1	1
South America	Tonga	1	1
South America	Fiji	1	1
South America	Vanuatu	1	1
South America	Palau	1	1
South America	Marshall Islands	1	1
South America	Micronesia	1	1
South America	Northern Mariana Islands	1	1
South America	Guam	1	1
South America	U.S. Virgin Islands	1	1
South America	Puerto Rico	1	1
South America	Aruba	1	1
South America	Curaçao	1	1
South America	Trinidad and Tobago	1	1
South America	Guyana	1	1
South America	Suriname	1	1
South America	French Guiana	1	1
South America	Guadeloupe	1	1
South America	Martinique	1	1
South America	Reunion	1	1
South America	Mayotte	1	1
South America	French Polynesia	1	1
South America	New Caledonia	1	1
South America	Wallis and Futuna	1	1
South America	Polynesia	1	1
South America	Samoa	1	

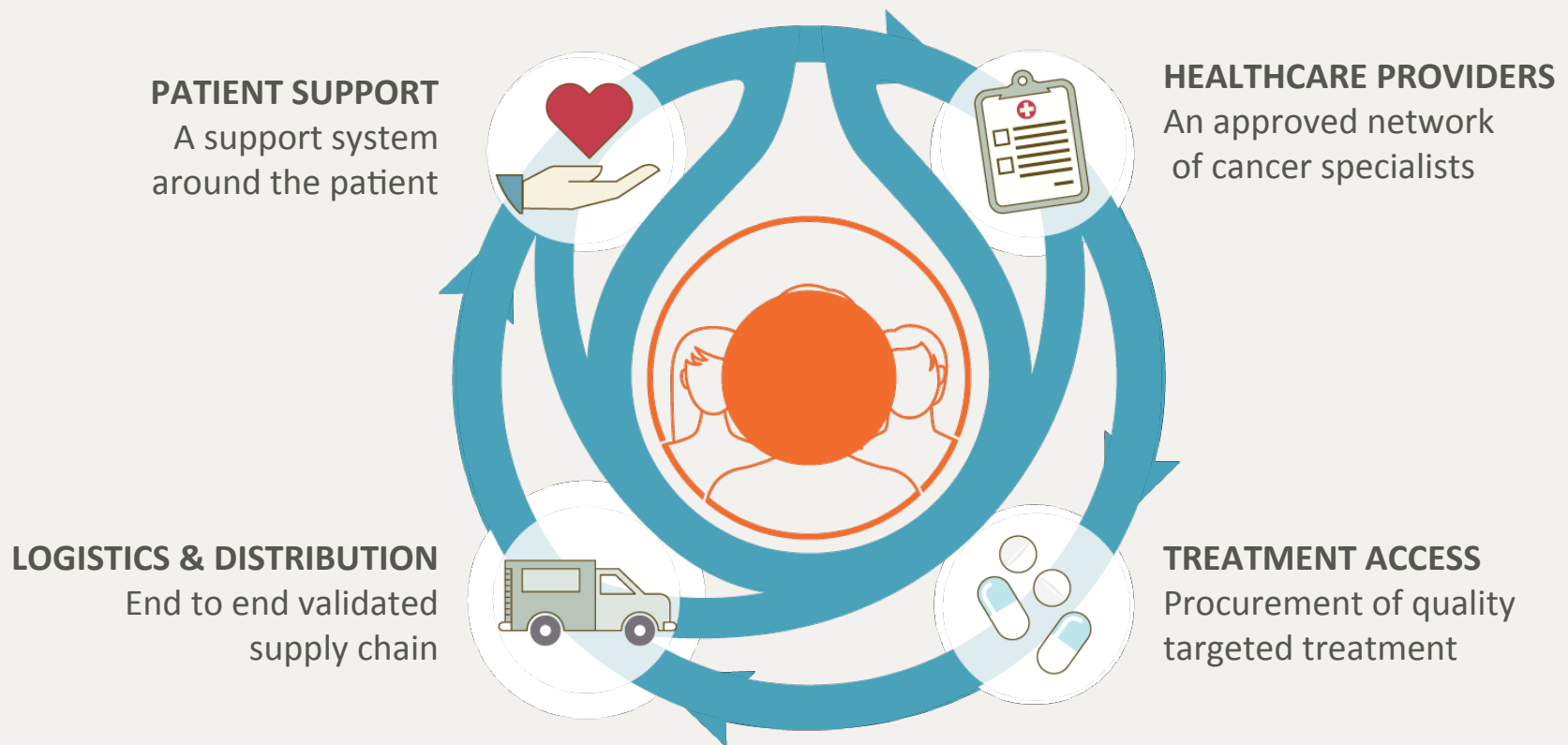


Our **mission** is to increase global access to treatment, care and support for people living with cancer.

*In memory of Max Rivarola, 1973-1991*

# The Max Access Solution Model

A patient centered system of humanitarian access to oncology treatment



# Max Access Solution for CML

