

## **PARALLEL SESSION 1.1**

**ADDRESSING THE BEHAVIOURAL DETERMINANTS OF NCDS: EMPOWERING OR VICTIM-BLAMING?**



## | BACKGROUND

It is emphasized from the outset that the multiplicity of inter-dependent determinants of NCDs need to be considered and addressed together as part of a comprehensive framework. This session, however, will focus on the behavioural determinants of NCDs, which encompass individual lifestyle factors, and the promotion of health and nutrition literacy and behavior change communication to address them. Four major NCD risk factors have significant behavioural dimensions at the level of the individual: tobacco use, physical inactivity, the harmful use of alcohol and unhealthy diets. NCDs impose a disproportionate burden that on poorer populations in upper income countries and across all populations in low and middle income countries. Given the evidence of greater impact of the behavioural determinants on populations with low socio-economic status, these groups require greater focus and appropriately tailored approaches. Despite the proliferation of health information on the Internet, there is often a lack of evidence-based and tailored information that is easily available to the general public, while on the other hand the public is receiving a huge amount of marketing information on unhealthy products from the various industries.

Health literacy refers, broadly, to the ability of individuals to “gain access to, understand and use information in ways which promote and maintain good health” for themselves, their families and their communities. Health literacy is particularly important in order to prevent and control NCDs and their shared risk factors. For example, people with higher levels of health literacy are better able to understand available nutrition information and to be empowered to make healthier choices, thus contributing to preventing both undernutrition and overweight and associated NCDs. At the same time, the availability and affordability of healthier choices and the socio-cultural contexts need to be considered and addressed – aspects covered in other parallel sessions.

A strand of narrative that has dominated the (industry promoted) discourse is that NCDs are primarily caused by poor individual choices on lifestyles, and that the strategy to prevent them is focused primarily on promoting healthy lifestyles, placing the onus (or blame) on the individual. This narrative still holds sway in certain contexts and among certain stakeholders – for example, in case of Governments which choose or are influenced to avoid addressing the wider socio-cultural, commercial and policy determinants, or among private sector stakeholders and the researchers they fund, which have vested interests in preventing those wider determinants from being addressed. The session will aim to explore this aspect of the narrative and reiterate that behavior change interventions support and complement strategies that address wider determinants of health.

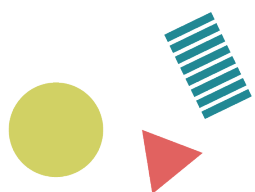
Social and behavior change communication – often in the form of “health education” – is one of the health promotion strategies to modify the behavioural risk factors through the life course and improve health and nutrition literacy. “Health education” is often the dominant form of behavior modification strategy in many countries. It should be considered one strategy among a comprehensive package which includes the legislative and policy measures addressed in other parallel sessions of the conference. It should be based on a thorough analysis of the epidemiological situation in each country by identifying the distribution of risk factors among different population groups and developing a national risk profile. Analysis of the social norms, socio-economic factors and motivators that influence individual behaviours should also be assessed, as well as the channels and communication approaches that are most likely to be accessed and successful among different groups. It should also assess the relative importance to different groups – including children and adolescents – of prevailing marketing of unhealthy foods and beverages, tobacco and alcohol. Another tactic to change individual behaviour is “nudging” to encourage people to make healthy choices, be more active, and eat better, among others, drawing on behavioural insight theory.

The session will emphasize the critical importance of starting early with health education interventions – during pregnancy, in early childhood and in adolescence – to create positive health related behaviours. It will discuss the evidence of the impact of early interventions on later NCDs.

This session will summarize the evidence on behavioural determinants in terms of data on prevalence of smoking, alcohol consumption, physical inactivity, unhealthy diets in different contexts – e.g. lower, middle and upper income countries, by income, age, sex etc – and evidence on various education/communication approaches to modify them. It will consider the question raised by the title of the session, whether behavior change interventions are empowering or victim-blaming. It will showcase examples of best practices, innovations and documented success from a range of countries in modifying NCD-related behaviours across the life course as well as potentially addressing failed strategies, and will identify knowledge gaps for further research and suggest recommendations going forward.

## | OBJECTIVES

- To examine the current state of evidence on various behavioural determinants of NCDs
- To explore the evidence on strategies to address various behavioural determinants: what works, what does not work, and why; plus suggestions for national strategies
- To discuss examples of national strategies to address behavioural determinants, particularly from LMICs
- To analyze the political economy of “promoting healthy lifestyles” and explore whether strategies are empowering or victim-blaming
- To identify knowledge gaps and research priorities





Panelist / Keynote Speaker

## Theresa Marteau

*Director of Behaviour and Health Research Unit, Department of Public Health and Primary Care*

University of Cambridge  
United Kingdom

Professor Theresa Marteau is Director of the Behaviour and Health Research Unit in the Clinical School at the University of Cambridge, and Director of Studies in Psychological and Behavioural Sciences at Christ's College, Cambridge. She studied psychology at the London School of Economics and Political Science (LSE) and the University of Oxford (Wolfson College). Her research interests include: i. development and evaluation of interventions to change behaviour (principally diet, tobacco and alcohol consumption) to improve population health and reduce health inequalities, with a particular focus on targeting non-conscious processes ii. risk perception and communication, particular of biomarker-derived risks, and their weak links with behaviour change iii. acceptability to publics and policy makers of government intervention to change behavior. She is a Fellow of the Academy of Medical Sciences and the Academy of Social Sciences. In 2017, she was appointed Dame Commander of the Order of the British Empire in recognition of her contribution to Public Health.